

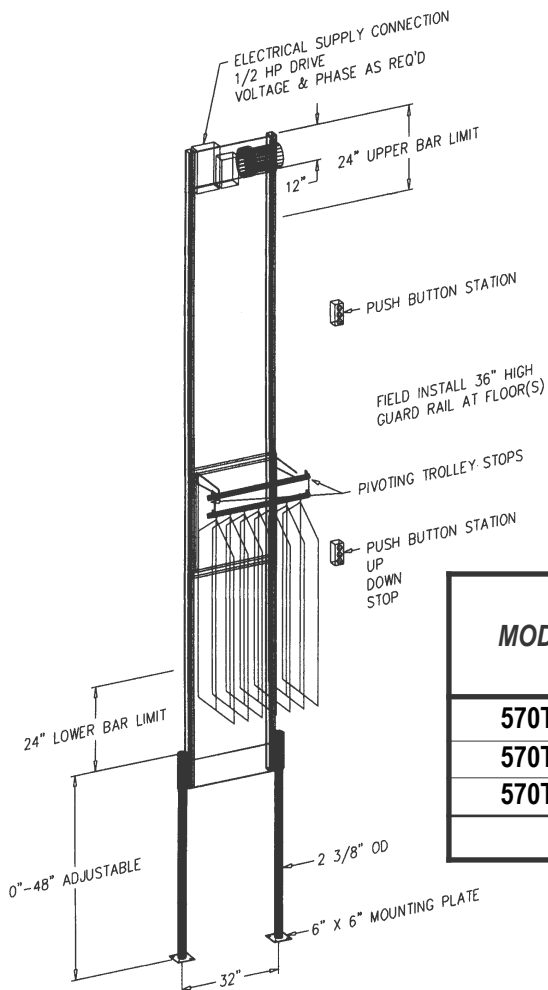
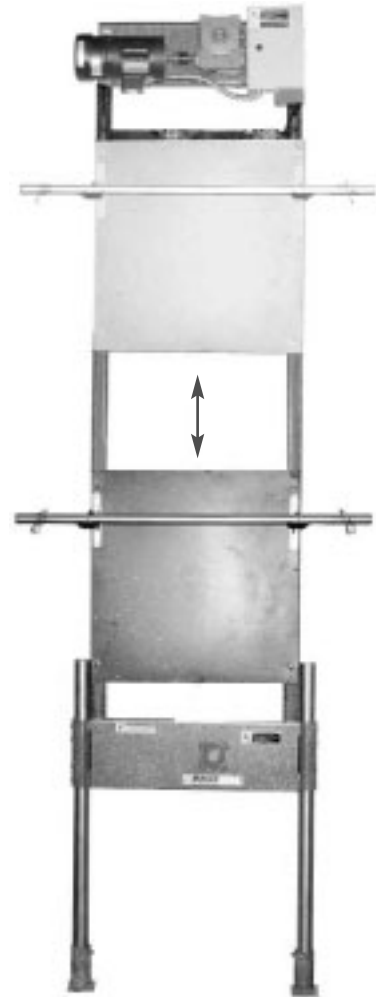
# RAILEX<sup>®</sup> Corp.

## System 570 T VERTICAL TROLLEY LIFT

*The Railex System 570 T is designed to lift trolleys between two levels.*

### STANDARD EQUIPMENT

- ◆ Automatic adjustable stops for both levels
- ◆ Push button operation
- ◆ Brake motor for accurate positioning
- ◆ Automatic trolley entry stops
- ◆ 115/208/220 Volt; 1 or 3 ∅



MODEL	OVERALL HEIGHT		* UPPER TROLLEY A.F.F.		SHIPPING WEIGHT IN POUNDS
	MIN.	MAX.	MIN.	MAX.	
570T10	10'	14'	8'	12'	635
570T15	15'	19'	13'	17'	685
570T20	20'	24'	18'	22'	735

\* ABOVE LOWER FLOOR