

RAILEX[®] Corp.

Locker Bag Storage
ELECTRIC

The Railex Conveyors
Illustrated
in this Brochure
are Specifically
Constructed
for use in
Hotels, Casinos
and
Correctional Facilities.

723CF~743CF 5.10

LOCKER STORAGE BAG ELECTRIC

There is a wide choice of bag density and spacing. Trolleys and carriers are steel and chrome plated. Bearings are sealed.

Added safety is provided by a chainless drive. Construction is modular. They are assembled and tested before shipping.

SINGLE TIER

Will accommodate any size garment bag.

TWO TIER

Height (c) determined by bag length and ceiling limitation.

BAG LENGTH WITH HANGER		OVERALL HEIGHT
A	B	C
29	29	6'-4"
36	36	7'-6"
42	42	8'-6"
48	48	9'-6"

OVERALL LENGTH

To all units, add 4" minimum clearance at ends and each side when adjacent to walls, columns, obstructions or other machines.

STANDARD CONTROLS

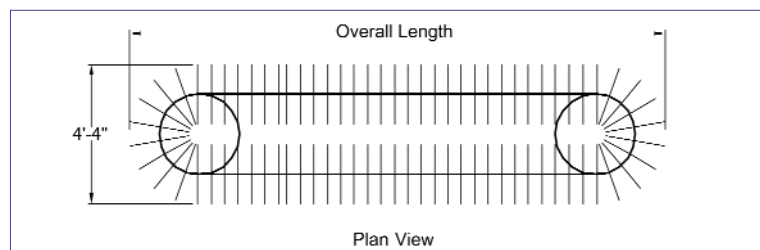
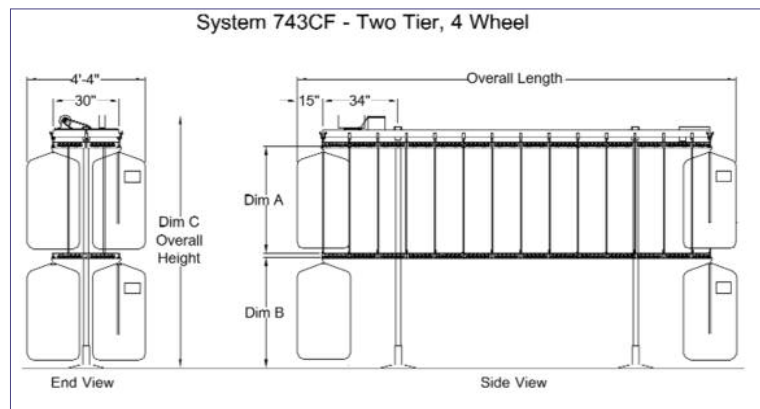
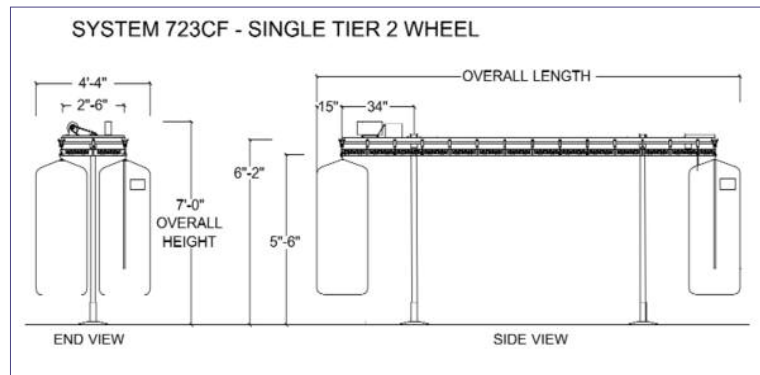
Bi-directional. May be mounted from conveyor frame or remotely. NEC CL2 low voltage, includes interconnecting cable and mounting brackets. Specify type and mounting.



HAND CONTROL



FOOT CONTROL



OPTIONAL CONTROLS ROBOT-MATIC SELECTORS

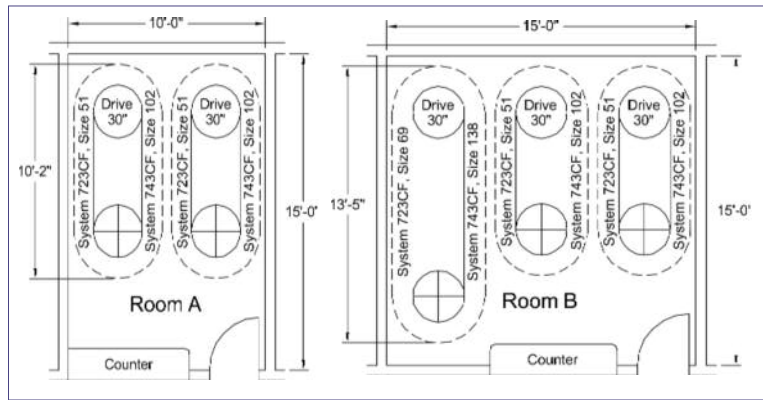
Remote positioning servo-systems that permit the attendant to select the desired position on the conveyor. It will automatically direct the conveyor to travel in the shortest direction. Automatic position restoration. Number selection is always visible. Operation is instantaneous.



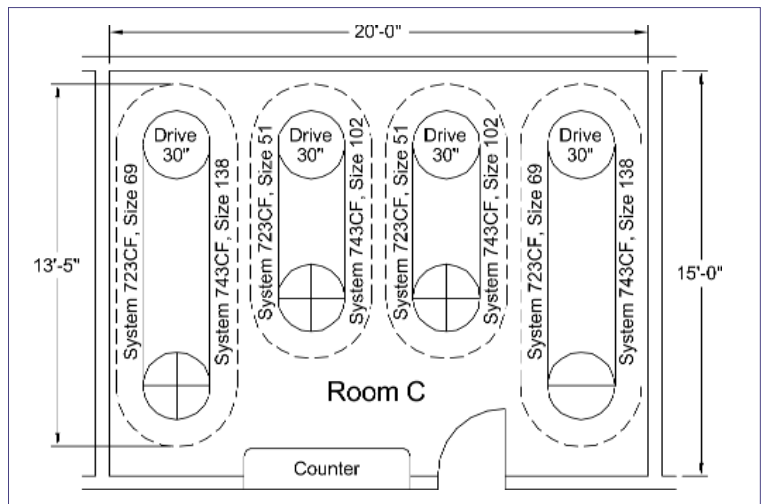
SYSTEM 1810D
DIGITAL

OVERALL LENGTHS WITH BAGS	Single Tier System 723CF		Two Tier System 743CF	
	NUMBER OF BAGS 4.33" EACH	LENGTH OF HANGING CAPACITY	NUMBER OF BAGS 4.33" EACH	LENGTH OF HANGING CAPACITY
8'-0"	39	14'-1"	78	28'-2"
9'-1"	45	16'-3"	90	32'-6"
10'-2"	51	18'-5"	102	36'-10"
11'-3"	57	20'-7"	114	41'-2"
12'-4"	63	22'-9"	126	45'-6"
13'-5"	69	24'-11"	138	49'-10"
14'-6"	75	27'-1"	150	54'-2"
15'-7"	81	29'-6"	162	58'-6"
16'-8"	87	31'-5"	174	62'-10"
17'-9"	93	33'-7"	186	67'-2"
18'-10"	99	35'-9"	198	71'-6"
19'-11"	105	37'-11"	210	75'-10"
21'-0"	111	40'-1"	222	84'-2"
22'-1"	117	42'-3"	234	84'-6"
23'-2"	123	44'-5"	246	88'-10"
24'-3"	129	46'-7"	258	93'-2"
25'-4"	135	48'-9"	270	97'-6"
26'-5"	141	50'-11"	282	101'-10"
27'-6"	147	53'-1"	294	106'-2"
28'-7"	153	55'-3"	306	110'-6"
29'-8"	159	57'-5"	318	114'-10"
30'-9"	165	59'-7"	330	119'-2"
31'-10"	171	61'-9"	342	123'-6"
32'-11"	177	63'-11"	354	127'-10"
34'-0"	183	66'-1"	366	132'-2"
35'-1"	189	68'-3"	378	136'-6"
36'-2"	195	70'-5"	390	140'-10"
37'-3"	201	72'-7"	402	145'-2"
38'-4"	207	74'-9"	414	149'-6"
39'-5"	213	76'-11"	426	153'-10"
40'-6"	219	79'-1"	438	158'-2"
41'-7"	225	81'-3"	450	162'-6"
42'-8"	231	83'-5"	462	166'-10"
43'-9"	237	85'-7"	474	171'-2"
44'-10"	243	87'-9"	486	175'-6"
45'-11"	249	89'-11"	498	179'-10"
47'-0"	255	92'-1"	510	184'-2"
48'-1"	261	94'-3"	522	188'-6"
49'-2"	267	96'-5"	534	192'-10"
50'-3"	273	98'-7"	546	197'-2"

TYPICAL LAYOUTS



Capacity dependent upon type of facility and geographical location. Values listed are average, allowing 4.33" per bag.



Room	Hanging Capacity	Number of Bags at 4.33" Each
SINGLE TIER		
A	37"	102
B	90"	249
C	186"	516
DOUBLE TIER		
A	74"	204
B	180"	498
C	372"	1,032

LOCKER BAGS



Mesh



Nylon

STAIR PLATFORM 1373CF28

Combines stability with height to easily and safely reach double tier units.



STANDARD FEATURES



Quiet, noiseless fast operation. Built-in overload protection. Electrical and mechanical interlock. Power on indicator. Prewired, ready for supply connection. Low voltage control circuit-NEC CL2

Full frame suspension completely encircles rail for rigidity and safety. UL and CSA listed and labeled.

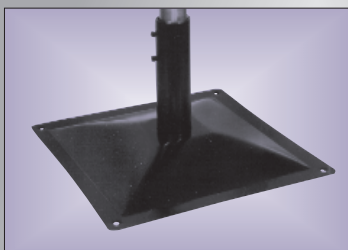
Chainless drive. Sealed bearings. Enclosed torque amplifier.

Steel chrome plated load bars. Choice of bag density and spacing

Steel chrome plated trolleys.

2 Wheel-SY723

4 Wheel-SY743



Flared large area base provides sturdy support, good appearance and easy floor maintenance



4 Wheel Trolley

Specification: Correctional Facility Equipment

PART ONE ~ GENERAL

1.01 Furnish storage and retrieval conveyor for locker bag storage.

- A. 1. System 723 CF Single tier, 2 Wheel Trolley, _____ ft. O.A.L.
Hanging capacity: _____ ft., _____ bags @ 4.33 inches each.
2. System 743 CF two tier, 4 wheel trolley, _____ ft. O.A.L.

1.02 The conveyor shall be U.L. and C.S.A. Approved, listed and labeled UL/E31853, CSA/18571

1/03 Provide shop and installed drawings, owner's manual, and maintenance instructions.

PART TWO ~ PRODUCTS AS MANUFACTURED BY THE RAILEX CORP., QUEENS, NY

2.03 Fabrication Mechanical

- A. All steel construction. Chrome plated steel load bars and trolleys.
- B. Torque amplifier fully enclosed, without open chain.
- C. Cushioned start-mechanical or electrical.

2.04 Fabrication Electrical

- A. Include electrical control systems, pre-wired ready for electrical supply connection.
- B. Bi-directional hand or foot operated controls, specify.
- C. Optional analog or digital microprocessor control included when specified and ordered. Short route, automatic restoration.
- D. Electrical supply 120/230 1 phase or 208/220 3 phase, other voltages available.

3.02 Warranty

Warranty for a period of one (1) year after installation, the replacement without cost, of any part defective in material and workmanship.

PART FOUR-ACCESSORIES, WHEN SPECIFIED AND ORDERED

4.01 Garment bags and hangers ~ Refer to Railex Brochure 1202

4.02 Stair Platform ~ Refer to Railex Brochure 1373-CF

RAILEX[®] Corp.

89-02 Atlantic Avenue, Ozone Park, NY 11416 ♦ Tel: (718) 845-5454 ♦ Fax: (718) 738-1020
E-mail: railex@railexcorp.com ♦ Website: www.railexcorp.com